

Logix Group

The life you deserve

**JUST
CAN'T
WAIT...**

...to enjoy my new home

 **BLOSSOM
zest**

A VIBRANT BEGINNING TO LIFE

Expressway, Sector - 143, Noida

www.logixgroup.in

Looking Forward...

Logix Group

The life you deserve



...to working out in the gym



*...to jogging in the park
around my apartment*



...to swimming in the pool



*...to dining in the restaurant
in my apartment complex*



*...to enjoying the landscaped
greens around my apartment*

 **BLOSSOM
zest**

A VIBRANT BEGINNING TO LIFE

Expressway, Sector - 143, Noida

www.logixgroup.in

Blossom Zest - The Logical Investment

Logix Group
The life you deserve

It's true; Logix Blossom Zest gives you the advantage of being close to all that's happening. Glide from your workout to work, from shopping to parties...in a matter of minutes. With construction proceeding rapidly, this is the time to make a logical investment! So, what are you waiting for, call today!



ACTUAL SITE PICTURE

 **BLOSSOM**
zest

A VIBRANT BEGINNING TO LIFE

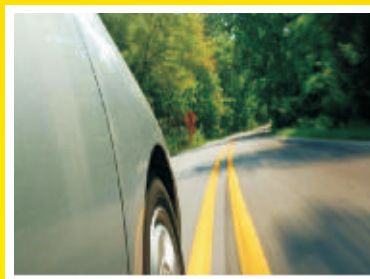
Expressway, Sector - 143, Noida

www.logixgroup.in

It's A Great Place To Be

Logix Group
The life you deserve

IDEAL SIZE, OPTIMIZED SPACE
STUDIO & 2 BHK APARTMENTS



ADVANTAGE LOCATION

LOCATED AT THE POINT WHERE EXPRESSWAY & FNG CORRIDOR MEET

EASY TO GET TO LOGIX ZEST SUPER FAST

WALKING DISTANCE FROM PROPOSED METRO STATION



STAY NEXT TO OFFICE, NEXT TO ALL THAT IS HAPPENING

NEXT TO THE CORPORATE & COMMERCIAL DISTRICTS OF NOIDA

THINGS NECESSARY FOR YOU ARE ALL NEXT DOOR

LEADING HOSPITALS & SCHOOLS WITHIN A RADIUS OF 5 KM

 **BLOSSOM**
zest

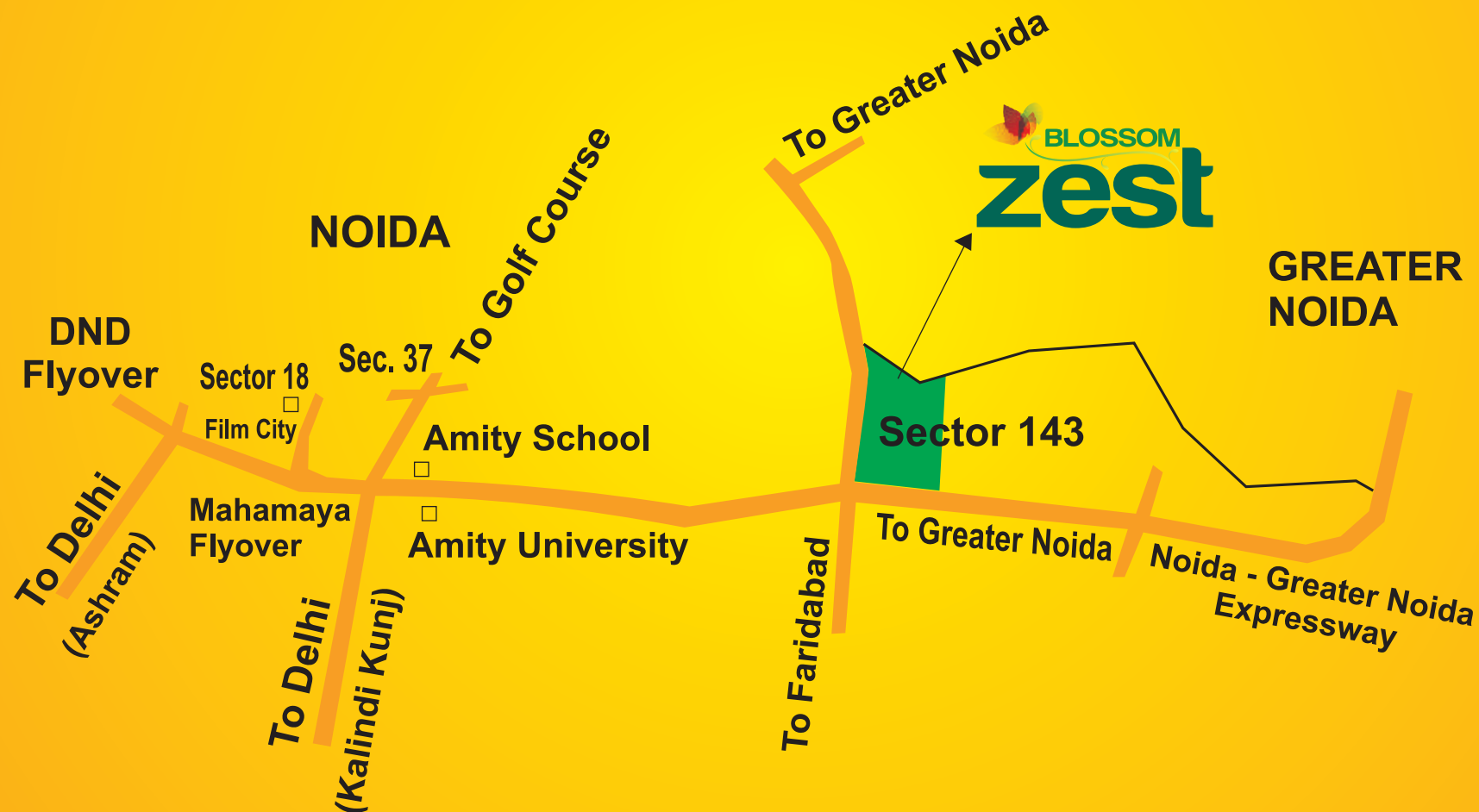
A VIBRANT BEGINNING TO LIFE

Expressway, Sector - 143, Noida

www.logixgroup.in

LOCATION MAP

Logix Group
The life you deserve



BLOSSOM
zest
A VIBRANT BEGINNING TO LIFE

Expressway, Sector - 143, Noida

MASTER PLAN

Logix Group
The life you deserve



BLOSSOM
zest

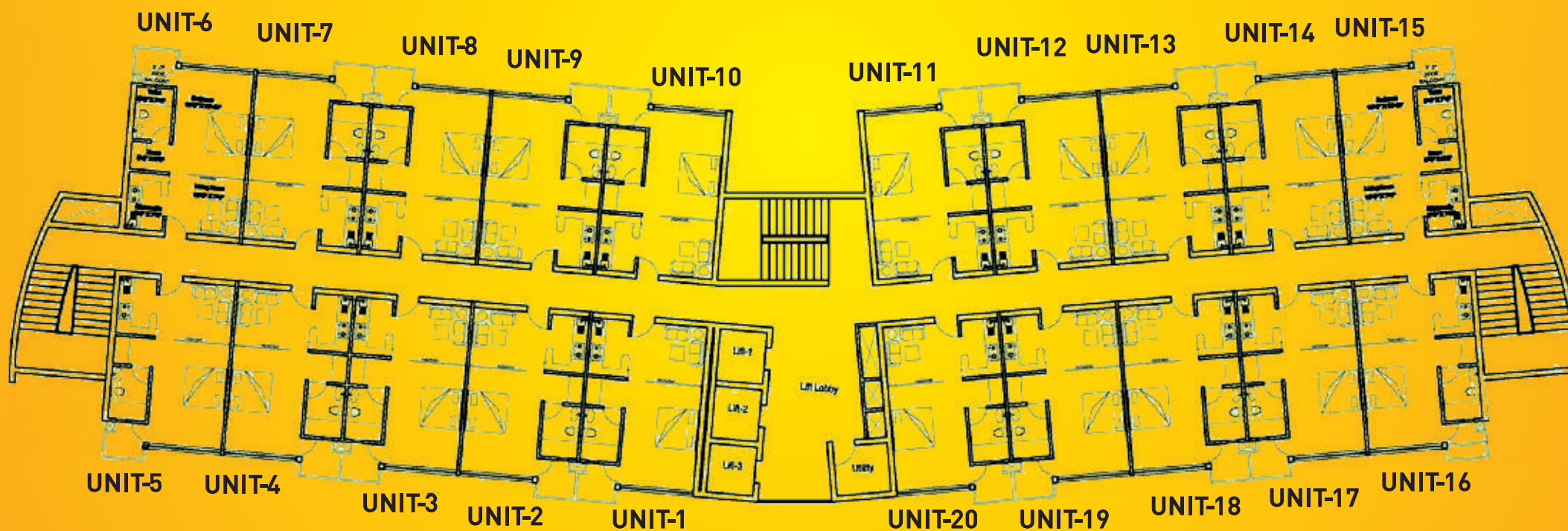
A VIBRANT BEGINNING TO LIFE
Expressway, Sector - 143, Noida

www.logixgroup.in

1BHK (STUDIO) APARTMENTS (CLUSTER PLAN)

Logix Group
The life you deserve

APARTMENTS FACING LANDSCAPED GREENS



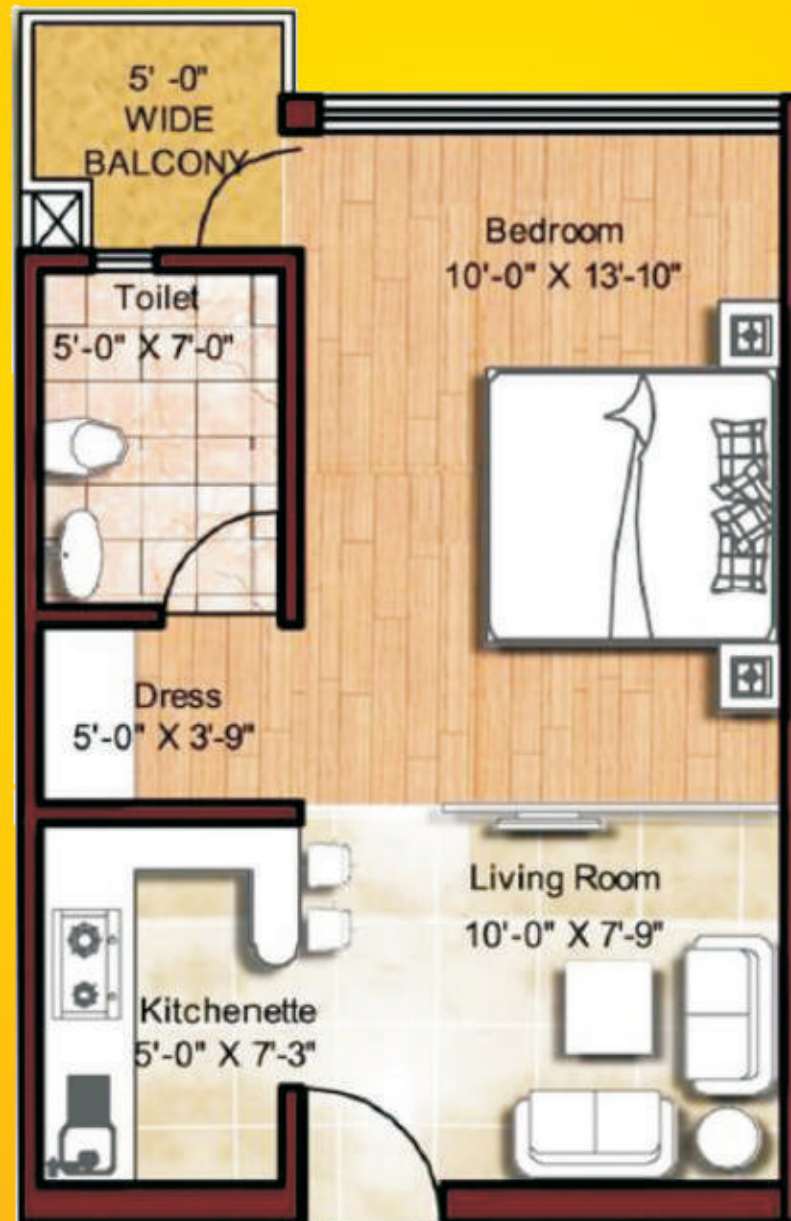
APARTMENTS FACING INNER GREENS

BLOSSOM
zest
A VIBRANT BEGINNING TO LIFE
Expressway, Sector - 143, Noida

STUDIO APARTMENTS TYPICAL UNIT PLAN

Logix Group
The life you deserve

TYPICAL 1 BHK
STUDIO APARTMENT
UNIT PLAN

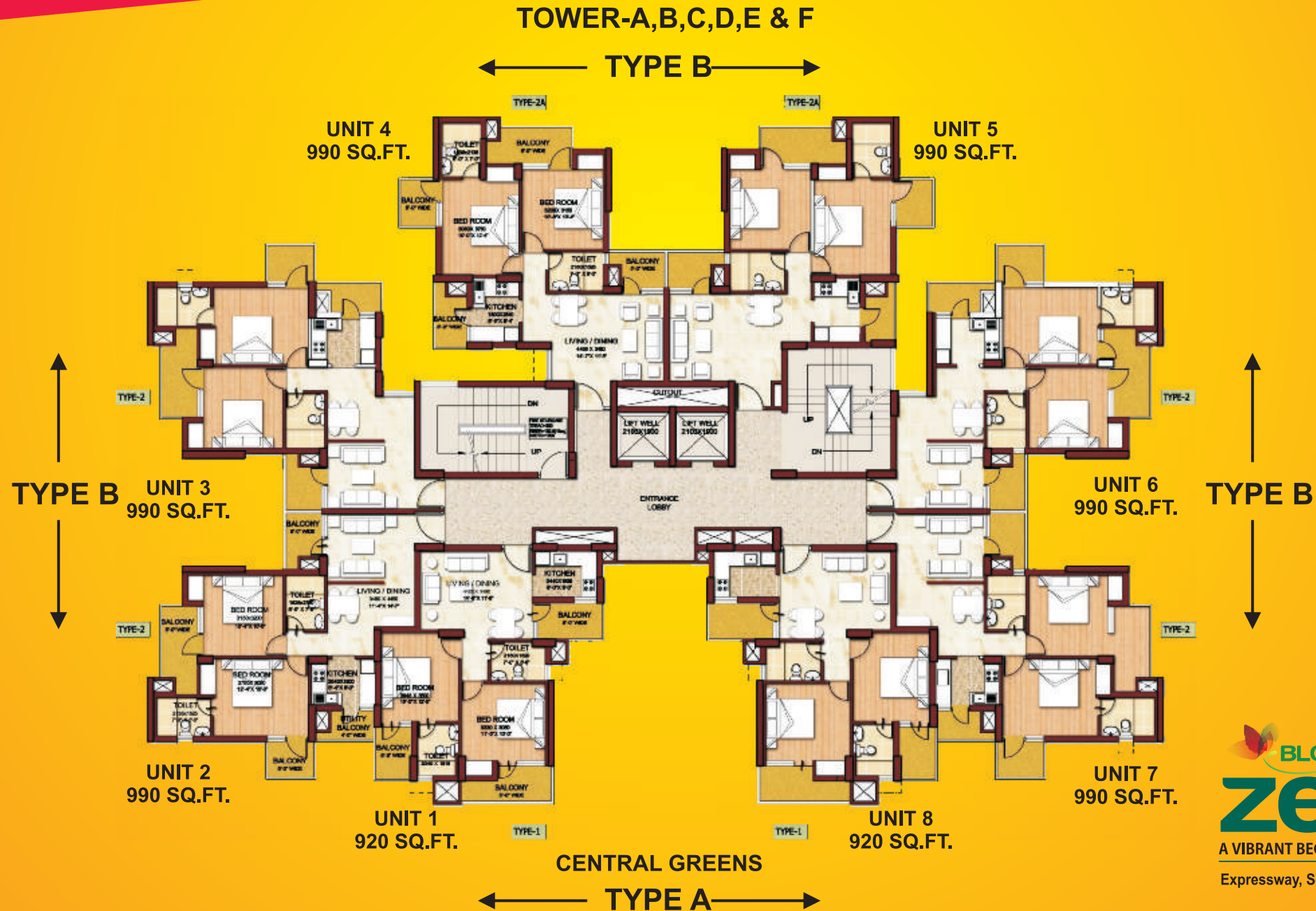


SALEABLE AREA: 470 SQ.FT.

BLOSSOM
zest
A VIBRANT BEGINNING TO LIFE
Expressway, Sector - 143, Noida

2BHK APARTMENTS (CLUSTER PLAN)

Logix Group
The life you deserve



BLOSSOM
zest
A VIBRANT BEGINNING TO LIFE
Expressway, Sector - 143, Noida

2 BHK APARTMENTS TYPE A - TYPICAL UNIT PLAN

Logix Group
The life you deserve



SALEABLE AREA:
920 SQ.FT

TYPE-A (1)

BLOSSOM
zest
A VIBRANT BEGINNING TO LIFE
Expressway, Sector - 143, Noida

2 BHK APARTMENTS TYPE B - TYPICAL UNIT PLAN

Logix Group
The life you deserve



SALEABLE AREA:
990 SQ.FT

TYPE-B (2)

BLOSSOM
zest
A VIBRANT BEGINNING TO LIFE
Expressway, Sector - 143, Noida

2 BHK APARTMENTS TYPE B - TYPICAL UNIT PLAN

Logix Group

The life you deserve



BLOSSOM
zest

A VIBRANT BEGINNING TO LIFE

Expressway, Sector - 143, Noida

www.logixgroup.in

EXTERNAL FAÇADE: Combination of stone work in dado & superior texture paint on all floors

Logix Group
The life you deserve

FLOORING:

High quality vitrified tiles in drawing/dinning/bedrooms. Branded anti-skid ceramic tiles in toilets and balcony. Studio apartment to have polished kota stone finish in the common corridor .

ELECTRICAL:

Copper wiring in concealed pvc conduits
Sufficient light and power points
Provision for tv, telephone points in living room and all bedrooms, ac points in all rooms. Power connections for chimney, exhaust, toaster/microwave, fridge and ro.

DOORS & WINDOWS:

Hardwood frames veneer finished entrance doors & flush/ skin doors in bedrooms. External aluminum doors and windows.

KITCHEN:

Granite counter top, stainless steel sink with drain board. Ceramic glazed tiles on walls. Flooring of branded anti – skid ceramic tiles.

TOILET:

Branded anti skid ceramic floor tiles, ceramic tiles up to 7 feet, kajaria/somany or equivalent, Sanitary ware : hindware, cera / equivalent, fittings: jaquar / equivalent.

INSIDE WALL & FINISH:

All internal walls with OBD as paint.

Logix City Developers Pvt. Ltd.

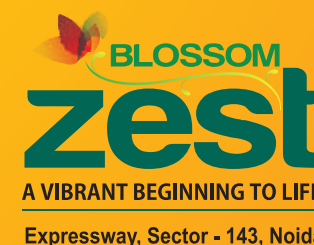
Logix Group: A-4 & 5, Sector-16, Noida (U.P.). Ph.: 0120-4366000 | **Email:** marketing@logixgroup.in

Regd. Office: 85 Ground Floor, World Trade Centre, Barakhamba Lane, New Delhi - 110001

CIN NO: U70101DL2011PTC215320

This property is mortgaged to "IDBI TRUSTEESHIP SERVICES LTD" & NOC is required for sale of unit/flat from "IDBI TRUSTEESHIP SERVICES LTD".

Disclaimer: The artistic renderings depicted here are in no way representative of the proposed buildings, apartments, surroundings, etc. The Developers/Owners/Architects reserve absolute right to alter/delete any details, specifications, designs, materials, area etc. as they deem fit without any notice. This is not the official offer for sale. All offers are subject to terms and conditions mentioned in the allotment booklet.



www.logixgroup.in